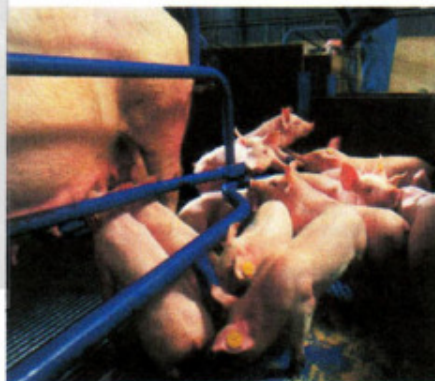
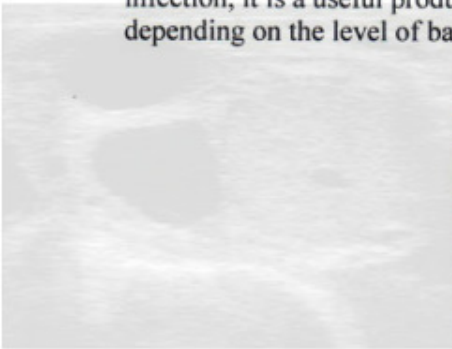


GH PIGLET BREW

Scouring is a response by the animal to rid itself of an unwanted organism in the gut. This organism often manifests itself as a gut irritant and scouring is a reflex action by the animal to produce extra body fluid to “flush out” the offending organism.

As a result of this process, nutrients required for bodily function are also lost, and the reduction in body fluids can lead to dehydration. In fact deaths as a result of scouring are often more due to dehydration than the organism itself.

GH Piglet Brew is designed to prevent scouring and to replace some of the nutrients lost in the scouring process. Whilst it is not an anti-bacterial and as such will not control any bacterial infection, it is a useful product to follow up medication, and often will be effective on it's own depending on the level of bacterial infection.



GH Piglet Brew contains the following ingredients:-

Sodium Bentonite	This acts as a gut binding agent and reduces the volume of lost fluid.
Electrolyte replacer	To replace lost body salts which are very soluble and quickly lost in the scouring process.
Trace Minerals	Copper, iron and zinc are included as a supplement to replace any lost.
Dextrose	Added as an energy source.

GH Piglet Brew is used by sprinkling on the floor of the creep area where the piglets congregate, and from where they will ingest it. For best results don't put too much out at one time as it could become fouled and unattractive to the piglets.